



Tiktok



Youtube



Website

Office address

Room 608, Building 1 Zhonghui International Mansion, Huicheng District, Huizhou, Guangdong Province, China

Factory address(USA)

BSL NEW ENERGY(USA) TECHNOLOGY CO.,LTD
Address:1036 Jacobson Road. Garland, TX 75042
E-Mail: sales@bslbattery.us
Tel.+(571)412-2485

Office address(European)

BSL New Energy Technology European B.V.A
ddress: Jollemanhof 221019GW Amsterdam

Factory address

Building 2, Area D, Qunyi Intelligent Manufacturing Industrial Park, Tonghu Ecological Intelligence Zone, Zhongkai, Huizhou, Guangdong, China

Key contact: Haley NingDirect:
+86-752-2819-469

E-mail:
inquiry@bsl-battery.com

Website:
www.lithium-battery-factory.com



Battery



Support your equipments the ultimate power upgrade with **BSLBATT® Lithium-ion batteries.**





BSILBATT®

PAGE 01

01

Company
Introduction

PAGE 09

02

LiFePO₄ For
Golf Carts
LSVs / UTVs

PAGE 11

03

LiFePO₄ For
Aerial Work
Platform

PAGE 17

04

LiFePO₄ For
Floor
Machine

PAGE 19

05

LiFePO₄ For
Boats
Trolling Motor

PAGE 21

06

LiFePO₄ For
Rvs / Camper
Trailer

PAGE 27

07

Factory advantage
dealer cooperation

Corporate advantage

Our Mission:

Decarbonizing low-speed vehicles around the world

- BSLBATT is a professional lithium-ion battery manufacturer, including R&D and OEM services for over 18 years. Our products comply with ISO/CE/UL/UN38.3/ROHS/IE standards.
- The company takes the development and production of advanced series "Battery" (best solution lithium battery) as its mission.
- BSLBATT lithium products power various applications, including solar power solutions, microgrids, home energy storage, golf carts, LSVs, RVs, marine, and industrial batteries.
- The company provides a full range of services and high-quality products, continuing to pave the way for a greener and more efficient future of energy storage.



R&D team

The R&D team has more than 60 people, and the CTO has more than 15 years of experience in lithium-ion batteries in the power field; the marketing and after-sales service team has more than 300 people.



Production capacity

3GWh+
About 1,000 sets per day,
30,000-35,000 sets per month



Patents

More than 60 as of June 2024



Description

BSLBATT is committed to providing customers with safe, lightweight and durable green energy products. Its main product targets are golf carts, low-speed vehicles, boats, trolling motors, RVs, aerial work platforms, floor machine batteries, etc.



Production base

More than 15000²



Factory Standard

IEC61690, IEC62133
ISO 12405-1:2011
ISO 12405-2:2012
ISO 12405-3:2014



Dealers

As of June 2024, there are more than 60 authorized dealers in 6 continents.



Lead time

4-6 weeks, depends on the quantity and customization requirements.



Export

60+ countries and regions

2011

**WISDOM INDUSTRIAL
POWER CO., LIMITED**

**Now known as
BSL NEW ENERGY
(Hong Kong)
CO., LIMITED**

2014

**Start lithium
Battery forklift
Lithium battery
Factory (BSLBATT)
-water cells**

**Factory in
Anhui Province**

2018

**The Lithium motive
division is quickly
developing.**

**The first generation
module is explored
and offered to customer
(ESS & MOTIVE)**

2021

**HUIZHOU BSLNEW ENERGY
COMPANYCO., LTD**

**Motive division different
cell's technology
from Wisdom**

2023

**Opened European
office and
warehouse.**

**Established a
manufacturing
base in Mexico City.**

2012

**HUIZHOU WISDOM
POWER TECHNOLOGY
CO.,LTD**

2017

**The lithium ess
division is quickly
developing.**

2020

**The second generation
module is explored.**

**Oil-based batteries are
being used in industrial
vehicles and forklifts.**

2022

**2,000 square meters of office and
warehouse in Dallas, Texas, USA**

**Dongguan Qingxi Town opened a
4,000 square meters energy storage
factory**

**Became the first company in China to
be awarded UL2580,UL1973 and IEC 62619
for the power battery products.**

Enterprise qualification

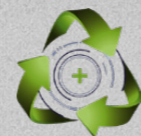


- We have obtained **60** invention patents and a utility model
- **5** software copyright.



Insurance

The BSLBATT product is insured by PICC, which offers global service to our customer. The people's insurance company of China limited, known as PICC group or just PICC, is a Chinese listed insurer.





Lithium advantages

All of these powerful advantages make BSLBATT LiFePO4 batteries an ideal replacement for traditional lead-acid batteries. Converting your batteries to lithium-ion may require a higher initial investment, but its ongoing savings in energy, equipment, labor, and downtime will significantly reduce your total cost of ownership (TCO).

Why pay more for LiFePO4?

BSLBATT's long-life LiFePO4 batteries reduce the inconvenience and expense of replacements and service calls, and provide peace of mind for many users in demanding applications. Our calculations compare the total cost of ownership of BSLBATT's B-LFP12-100 (12V 100Ah LiFePO4 battery) to three equally sized (BCI Group31) off-the-shelf lead-acid battery technologies. Using measured life taken from each battery's published manufacturer specifications, our analysis shows that BSLBATT's lifetime cost is at least 40% lower than the most cost-effective lead-acid battery.

LiFePO4 Batteries VS Lead-Acid Batteries

LiFePO4		Lead-Acid	
Around 10 years	Design life	3 years	
>3,500 times	Cycle life	<500 times	
Maintenance-free	Maintenance	Regular maintenance required	
*About 2.5 hours, charge any time	Charging time/frequency	About 8 to 10 hours, charge after use	
Multiple built-in protections	Safety	Potential acid spills	
Eco-friendly	Environment effects	Harmful lead	

* Specific models charged in BSLBATT original chargers can achieve 2.5 hours of charging time.

Total cost over life comparison*

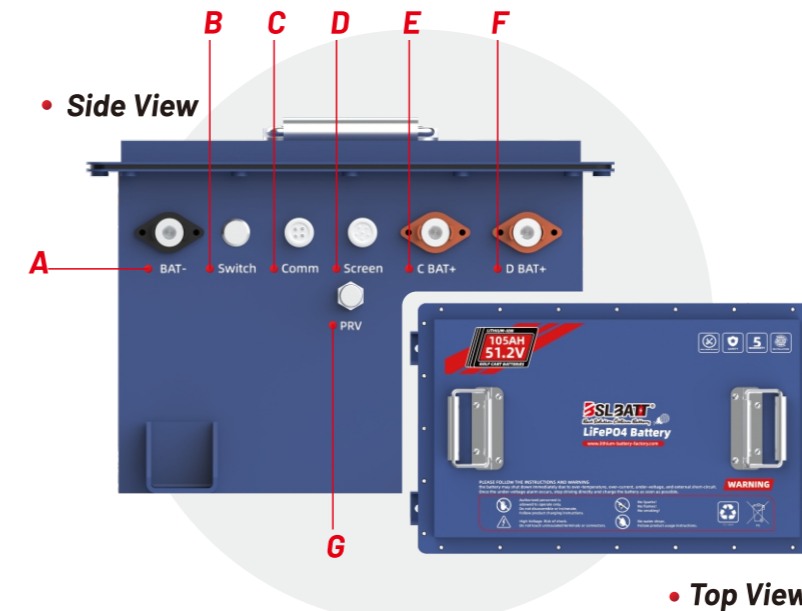
COST FACTOR	FLA	AGM	GEL	BSLBATT LiFePO4
PURCHASE COST	\$	\$ \$	\$ \$ +	\$ \$ \$
INSTALLATION COST	\$	\$	\$	\$
MAINTENANCE COST	\$ \$ \$	\$	\$...
CHARGING COST	\$ \$ \$ \$ \$	\$ \$ \$ \$ \$	\$ \$ \$ \$ \$	\$ \$
REPLACEMENT COST	\$ \$ \$ \$ \$	\$ \$ \$ \$ \$ +	\$ \$ \$ \$ \$...
REPLACEMENT LABOR	\$ \$ \$	\$ \$ \$ \$	\$ \$ \$...
NO. OF REPLACEMENTS	████████	██████████	████████	...
CYCLE LIFE	○○○	○○	○○○	○○○○○+
TOTAL COST OVER LIFE	\$ \$ \$ \$ \$	\$ \$ \$ \$ \$ +	\$ \$ \$ \$ \$	\$ \$

Battery performance

Why choose BSL?



B-LFP48-105GC



Side View:

- A. Charge and discharge negative port
- B. Power switch
- C. Communication interface
- D. Display screen interface (SOC)
- E. Positive charging port (M8)
- F. Positive discharge port (M8)
- G. Explosion proof valve

Technical bslbatt lithium curve

BSLBATT Lithium battery has a longer constant stable curve during discharge

Range: goes the distance and then some.

- 60-80 miles on a full charge - 15% more than the competition
-

Durability: handles the bumps and jolts of daily life.

- BSLBATT LiFePo4 batteries meet SAE (Society of Automotive Engineers) standards for durability and vibration.
-

Charging: fast and flexible.

- A full charge takes just 4 hours, compared to 8-10 hours for lead-acid batteries, and charging at any time won't damage the battery.
-

Safety: proof that safe can be exciting.

- Stable LiFePo4. 6 levels of safety redundancy, 5 internal temperature sensors, and a self-protecting battery monitoring system.
-

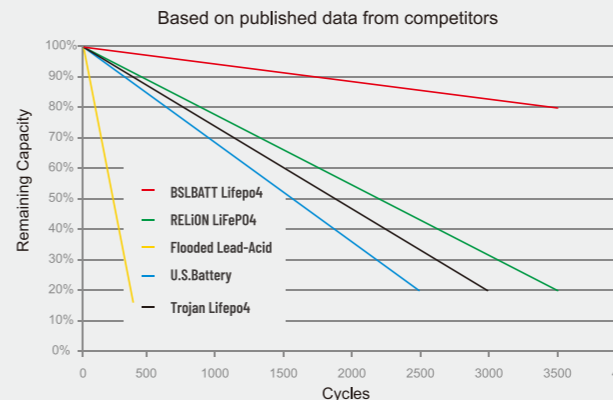
Maintenance: what can we say? there is none.

- No watering required. No acid - no corrosion. No acid drips, no charging fumes.
-

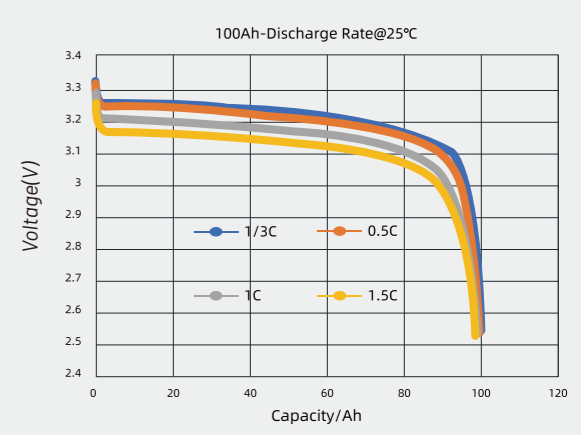
Long-lasting: want no downtime? no problem.

- BSLBATT LiFePo4 batteries have a 12-year lifespan. Lasts 4-5 times longer than lead-acid batteries and is backed by an industry-leading 5-year warranty.

CYCLE LIFE VS. DEPTH OF DISCHARGE(DOD)AT 80% DISCHARGE 1C/CHARGE 0.5C @ 25°C(77°F)

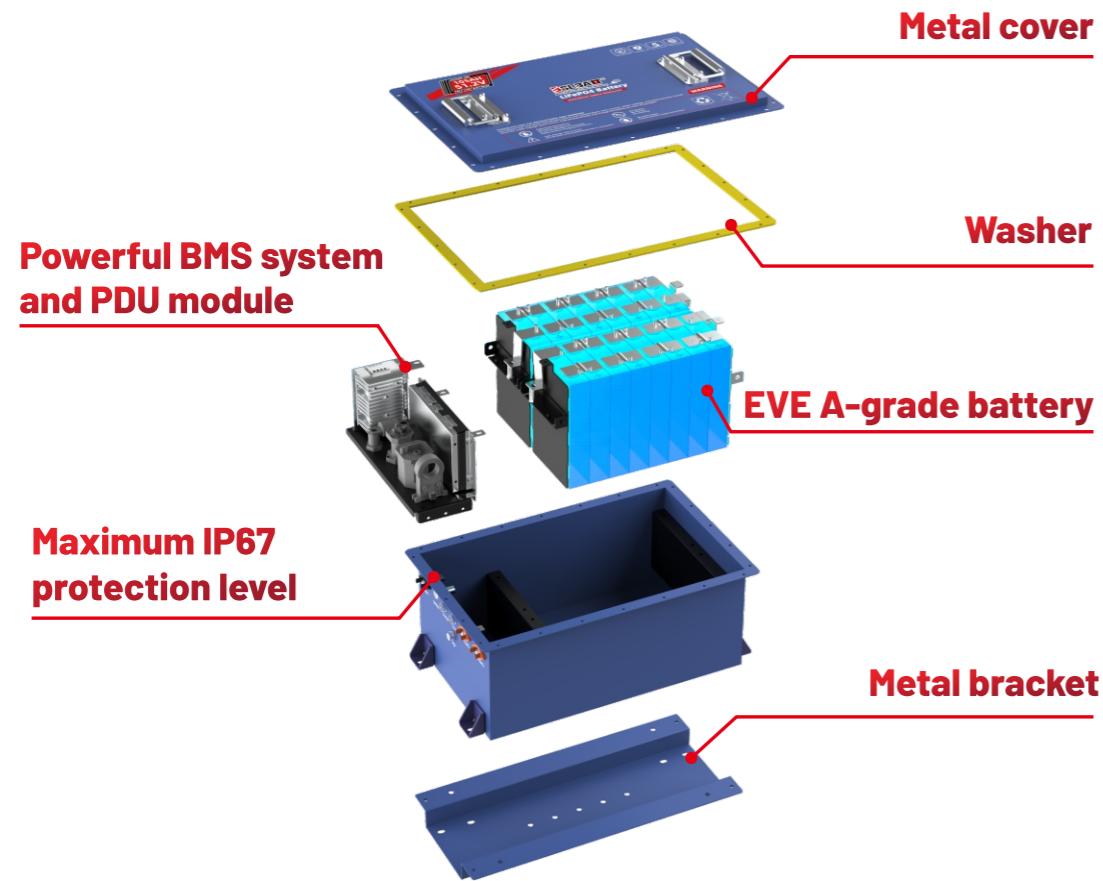


DISCHARGE CURRENT: 1/3C / 0.5C / 1C / 1.5C



LiFeP04 Batteries

Golf Cart Battery Pack Disassembly



Product accessories



Product list [Popular capacity]

Model	Voltage	Capacity (Ah)	LBS (weight)	Maximum discharge 10S	L W H (Inches)	L W H (mm)	Cycle life	Nominal Energy (kWh)	Estimated mileage	Casing Material
B-LFP36-105GC	38.4	105	92.1 lbs (41kg)	250A	17.3*13.1*8.7	440*333*222	≥3500@80%DOD	4.03kWh	30-40 miles 48-64km	Iron
B-LFP48-67GC	51.2	67	70 lbs (32kg)	200A	17.6*13.1*8.7	446*333*222	≥3500@80%DOD	3.43kWh	25-35 miles 40-56km	Iron
B-LFP48-105GC	51.2	105	114 lbs (52kg)	250A	21.7*13.1*8.7	550*333*222	≥3500@80%DOD	5.37kWh	40-50 miles 64-80km	Iron
B-LFP48-135GC	51.2	135	147 lbs (67kg)	300A	24.0*13.1*9.3	610*333*236	≥3500@80%DOD	6.86kWh	50-60 miles 80-97km	Iron
B-LFP48-150GC	51.2	150	163 lbs (74kg)	315A	28.4*16.5*8.7	720*420*222	≥3500@80%DOD	7.68kWh	60-70 miles 97-113km	Iron
B-LFP48-205GC	51.2	205	202 lbs (92kg)	400A	31.5*17.3*10.6	800*400*270	≥3500@80%DOD	10.49kWh	80-90 miles 129-145km	Iron
B-LFP72-105GC	73.6	105	161 lbs (73kg)	250A	28.0*13.1*8.7	710*333*222	≥3500@80%DOD	7.72kWh	50-60 miles 80-97km	Iron
B-LFP72-135GC	73.6	135	207 lbs (94kg)	300A	36.2*13.1*8.7	920*333*222	≥3500@80%DOD	9.86kWh	60-70 miles 97-113km	Iron
B-LFP72-205GC	73.6	205	297 lbs (135kg)	400A	42.1*13.0*11.7	1070*300*298	≥3500@80%DOD	15.08kWh	90-100 miles 145-161km	Iron

Working Temperature Range

Charge	Discharge	Customized protection level
32°F~131°F (0°C ~ 55°C)	-4°F~131°F (-20°C ~ 55°C)	IP54-IP67
Storage (1 month)	Storage (1 year)	
-4°F~131°F (-20°C ~ 55°C)	32°F~95°F (0°C~35°C)	

Note: 1. Only authorized professionals can operate or adjust the battery.
 2. All data based on BSLBATT standard test procedure (2 passengers) on flat road. Expected mileage may vary depending on actual conditions (steep slopes, number of passengers, temperature).



Compatibility chart

CLUB CAR



DS 36V

Battery Voltage	Parallel
38V 105Ah	Y
48V 67Ah	Y
48V 105Ah	N
48V 134Ah	N
48V 150Ah	N
48V 205Ah	N
72V 134Ah	N
72V 205Ah	N



DS 48V "ALL"

Battery Voltage	Parallel
38V 105Ah	N
48V 67Ah	Y
48V 105Ah	Y
48V 134Ah	N
48V 150Ah	N
48V 205Ah	N
72V 134Ah	N
72V 205Ah	N



VILLAGER 48V

Battery Voltage	Parallel
38V 105Ah	N
48V 67Ah	Y
48V 105Ah	Y
48V 134Ah	Y
48V 150Ah	Y
48V 205Ah	N
72V 134Ah	N
72V 205Ah	N

EZGO



FREEDOM/TXT 36V

Battery Voltage	Parallel
38V 105Ah	Y
48V 67Ah	Y
48V 105Ah	Y
48V 134Ah	Y
48V 150Ah	Y
48V 205Ah	Y
72V 134Ah	N
72V 205Ah	N



FREEDOM/TXT 48V

Battery Voltage	Parallel
38V 105Ah	Y
48V 67Ah	Y
48V 105Ah	Y
48V 134Ah	Y
48V 150Ah	Y
48V 205Ah	Y
72V 134Ah	N
72V 205Ah	N



FREEDOM/RXV PLASTIC

Battery Voltage	Parallel
38V 105Ah	N
48V 67Ah	Y
48V 105Ah	Y
48V 134Ah	Y
48V 150Ah	Y
48V 205Ah	Y
72V 134Ah	N
72V 205Ah	N



ONWARD

Battery Voltage	Parallel
38V 105Ah	N
48V 67Ah	Y
48V 105Ah	Y
48V 134Ah	Y
48V 150Ah	Y
48V 205Ah	Y
72V 134Ah	N
72V 205Ah	N



PRECEDENT('04-'08)

Battery Voltage	Parallel
38V 105Ah	N
48V 67Ah	Y
48V 105Ah	Y
48V 134Ah	Y
48V 150Ah	Y
48V 205Ah	Y
72V 134Ah	N
72V 205Ah	N



PRECEDENT('08-NEWER)

Battery Voltage	Parallel
38V 105Ah	N
48V 67Ah	Y
48V 105Ah	Y
48V 134Ah	N
48V 150Ah	N
48V 205Ah	N
72V 134Ah	N
72V 205Ah	N



FREEDOM/RXV METAL

Battery Voltage	Parallel
38V 105Ah	N
48V 67Ah	Y
48V 105Ah	Y
48V 134Ah	Y
48V 150Ah	Y
48V 205Ah	Y
72V 134Ah	N
72V 205Ah	N



EXPRESS

Battery Voltage	Parallel
38V 105Ah	N
48V 67Ah	N
48V 105Ah	Y
48V 134Ah	Y
48V 150Ah	Y
48V 205Ah	Y
72V 134Ah	N
72V 205Ah	N



MEDALIST

Battery Voltage	Parallel
38V 105Ah	Y
48V 67Ah	N
48V 105Ah	Y
48V 134Ah	Y
48V 150Ah	Y
48V 205Ah	Y
72V 134Ah	Y
72V 205Ah	Y



TEMPO

Battery Voltage	Parallel
38V 105Ah	N
48V 67Ah	Y
48V 105Ah	Y
48V 134Ah	Y
48V 150Ah	Y
48V 205Ah	Y
72V 134Ah	N
72V 205Ah	N



CARRYALL 2015+ 48V

Battery Voltage	Parallel
38V 105Ah	N
48V 67Ah	Y
48V 105Ah	Y
48V 134Ah	Y
48V 150Ah	Y
48V 205Ah	Y
72V 134Ah	N
72V 205Ah	N



TRANSPORTER 48V

Battery Voltage	Parallel
38V 105Ah	N
48V 67Ah	Y
48V 105Ah	Y
48V 134Ah	Y
48V 150Ah	Y
48V 205Ah	Y
72V 134Ah	N
72V 205Ah	N

Note: These BSLBATT battery conversions are for carts originally equipped with lead-acid batteries!



Compatibility chart

YAMAHA



DRIVE 1/G29(07-10)

Battery Voltage	Parallel
38V 105Ah	N
48V 67Ah	Y
48V 105Ah	Y
48V 134Ah	Y
48V 150Ah	Y
48V 205Ah	Y
72V 134Ah	N
72V 205Ah	N



DRIVE 2011+

Battery Voltage	Parallel
38V 105Ah	N
48V 67Ah	Y
48V 105Ah	Y
48V 134Ah	Y
48V 150Ah	Y
48V 205Ah	Y
72V 134Ah	N
72V 205Ah	N



G1 - G16

Battery Voltage	Parallel
38V 105Ah	N
48V 67Ah	Y
48V 105Ah	Y
48V 134Ah	Y
48V 150Ah	Y
48V 205Ah	Y
72V 134Ah	N
72V 205Ah	N



G19 / G22

Battery Voltage	Parallel
38V 105Ah	N
48V 67Ah	Y
48V 105Ah	Y
48V 134Ah	Y
48V 150Ah	Y
48V 205Ah	Y
72V 134Ah	N
72V 205Ah	N

Compatible Golf Cart brands



OTHERS



ICON EV "ALL"

Battery Voltage	Parallel
38V 105Ah	N
48V 67Ah	N
48V 105Ah	Y
48V 134Ah	Y
48V 150Ah	Y
48V 205Ah	Y
72V 134Ah	N
72V 205Ah	N



ADVANCED EV "ALL"

Battery Voltage	Parallel
38V 105Ah	N
48V 67Ah	N
48V 105Ah	Y
48V 134Ah	Y
48V 150Ah	Y
48V 205Ah	Y
72V 134Ah	N
72V 205Ah	N



6 PASSENGERS

Battery Voltage	Parallel
38V 105Ah	N
48V 67Ah	N
48V 105Ah	N
48V 134Ah	N
48V 150Ah	Y
48V 205Ah	Y
72V 134Ah	Y
72V 205Ah	Y



8 PASSENGERS

Battery Voltage	Parallel
38V 105Ah	N
48V 67Ah	N
48V 105Ah	N
48V 134Ah	N
48V 150Ah	N
48V 205Ah	Y
72V 134Ah	Y
72V 205Ah	Y

NUMBER OF PASSENGERS

■ Fits and is compatible with Factory Controller and Motor (Drop In)
■ It will fit and work, but our green recommendations are better options.
■ Fits but will require upgraded controller and/or motor
■ Does Not Fit and/or will not work with this cart (Will Require Lots of Modification)

Note: These BSLBATT battery conversions are for carts originally equipped with lead-acid batteries!

Disclaimer: The above information is only used to illustrate that BSLBATT products are applicable to the products of the above brands in specific cases. It should not be regarded as illegal use of third-party brands and trademarks. You should not infer that BSLBATT has established or has any agency, employment, partnership or joint venture relationship with the above companies.

LiFePO4 Batteries

For Aerial Work Platform

0
Zero maintenance,
reducing labor costs and
employee injuries

🔌
No dedicated
charging
room required

🔌
Charge at any
time, reducing
downtime

🔌
Save up to 70% in
5 years, designed
life of 12 years



Best lithium battery solutions for the following Aerial Work Platform brands

- JLG Industries • Genie • Skyjack • Haulotte Snorkel
- Taski • Niftylift • Aichi Corporation • Manitou Group
- MEC Aerial Work Platforms • Dingli • Bronto Skylift

Product list [Popular capacity]

Model	Voltage	Capacity (Ah)	Nominal Energy (kWh)	Working Current	PEAK Continuous Current(10s)	L W H MM	L W H Inches	Cycle life	Casing Material
B-LFP24-105AWP	25.6	105	2.68kWh	105A	210A	436*325*215	17.2*12.8*8.5	≥3500@ 80%DOD	Iron
B-LFP24-135AWP	25.6	135	3.43kWh	135A	270A	446*333*222	17.6*13.1*8.7	≥3500@ 80%DOD	Iron
B-LFP24-150AWP	25.6	150	3.84kWh	150A	300A	440*333*222	17.3*13.1*8.7	≥3500@ 80%DOD	Iron
B-LFP24-205AWP	25.6	205	5.25kWh	205A	410A	550*333*222	21.7*13.1*8.7	≥3500@ 80%DOD	Iron
B-LFP24-280AWP	25.6	280	7.16kWh	280A	560A	450*360*290	17.7*14.2*11.4	≥3500@ 80%DOD	Iron
B-LFP36-105AWP	38.4	105	4.03kWh	105A	210A	440*333*222	17.3*13.1*8.7	≥3500@ 80%DOD	Iron
B-LFP36-150AWP	38.4	150	5.76kWh	150A	300A	600*333*222	23.6*13.1*8.7	≥3500@ 80%DOD	Iron
B-LFP36-205AWP	38.4	205	7.87kWh	205A	410A	810*333*222	31.9*13.1*8.7	≥3500@ 80%DOD	Iron
B-LFP36-280AWP	38.4	280	10.75kWh	280A	560A	580*380*320	22.8*15*12.6	≥3500@ 80%DOD	Iron
B-LFP36-410AWP	38.4	410	15.74kWh	410A	820A	800*380*320	31.5*15*12.6	≥3500@ 80%DOD	Iron

Working Temperature Range

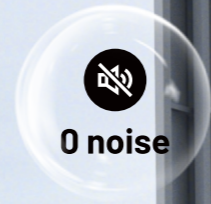
Charge	Discharge	Protection level
32°F~131°F (0°C ~ 55°C)	-4°F~131°F (-20°C ~ 55°C)	Ip65
Storage (1 month)	Storage (1 year)	
-4°F~131°F (-20°C ~ 55°C)	32°F~95°F (0°C~35°C)	

Application vehicle

Aerial Work Platforms	Aerial Lifts	Arm Lifts
Articulating Booms	Articulating Boom Telescopic Lifts	Boom Lifts
Crane Vehicles	Maintenance Platforms	Mast Booms
Mast Lifts	Mobile Elevated Work Platforms	Mobile Vertical Lifts
Personnel Lifts	Scissor Lifts	Service Platforms
Specialty Lifts	Telescopic Booms	Telescopic Lifts
Towable Booms	Trailer Mounted Lifts	

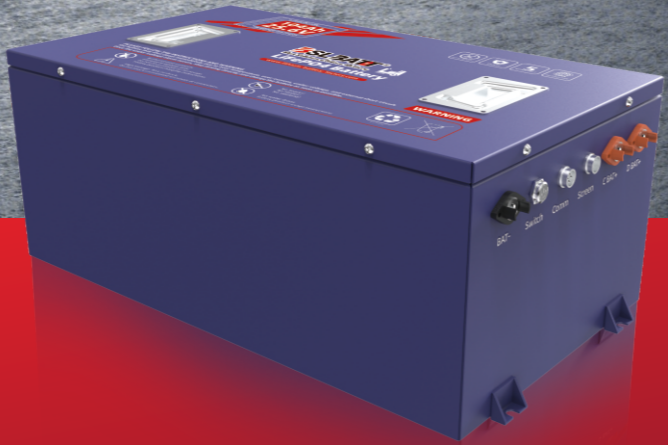
LiFeP04 Batteries

For Floor Machines



Best lithium battery solutions for the following Floor Machine brands

- Tennant • Nilfisk • Kärcher • Hako • Taski • Advance
- Comac • FIMAP • Viper • PowerBoss



Product list [Popular capacity]

Model	Voltage	Capacity (Ah)	Nominal Energy (kWh)	Working Current	PEAK Continuous Current(10s)	L W H MM	L W H Inches	Cycle life	Casing Material
B-LFP24-105FM	25.6	105	2.68kWh	105A	210A	436*325*215	17.2*12.8*8.5	≥3500@ 80%DOD	Iron
B-LFP24-135FM	25.6	135	3.43kWh	135A	270A	446*333*222	17.6*13.1*8.7	≥3500@ 80%DOD	Iron
B-LFP24-150FM	25.6	150	3.84kWh	150A	300A	440*333*222	17.3*13.1*8.7	≥3500@ 80%DOD	Iron
B-LFP24-205FM	25.6	205	5.25kWh	205A	410A	550*333*222	21.7*13.1*8.7	≥3500@ 80%DOD	Iron
B-LFP24-280FM	25.6	280	7.16kWh	280A	560A	450*360*290	17.7*14.2*11.4	≥3500@ 80%DOD	Iron
B-LFP36-105FM	38.4	105	4.03kWh	105A	210A	440*333*222	17.3*13.1*8.7	≥3500@ 80%DOD	Iron
B-LFP36-150FM	38.4	150	5.76kWh	150A	300A	600*333*222	23.6*13.1*8.7	≥3500@ 80%DOD	Iron
B-LFP36-205FM	38.4	205	7.87kWh	205A	410A	810*333*222	31.9*13.1*8.7	≥3500@ 80%DOD	Iron
B-LFP36-280FM	38.4	280	10.75kWh	280A	560A	580*380*320	22.8*15*12.6	≥3500@ 80%DOD	Iron
B-LFP36-410FM	38.4	410	15.74kWh	410A	820A	800*380*320	31.5*15*12.6	≥3500@ 80%DOD	Iron

Working Temperature Range

Charge	Discharge	Protection level
32°F~131°F (0°C ~ 55°C)	-4°F~131°F (-20°C ~ 55°C)	Ip65
Storage (1 month)	Storage (1 year)	
-4°F~131°F (-20°C ~ 55°C)	32°F~95°F (0°C~35°C)	

Application vehicle

Floor Scrubbers	Floor Machines
Sweepers - Ride On / Stand On / Walk Behind	Floor Buffers
Carpet Extractors	Scrubber / Dryers - Ride On / Stand On / Walk Behind
Scrubber / Burnishers	

Product list [Popular capacity]

Replacement for Lead Acid, GEL or AGM
in LFP Battery Solutions

12V/24V/36V/48V



Drop-in Replacement



Tier One, A+ LiFePO4 Cell Composition



5 Years Warranty Guarantee



Smart Hardware & Software Design



Long Service Life



Eco-Friendly



Product list [Popular capacity]

Model	Voltage	Capacity (Ah)	Nominal Energy (Wh)	Weight LBS (KG)	Working Current	PEAK Continuous Current (10s)	L W H MM	L W H Inches	Cycle life	Casing Material
B-LFP12-20	12.8	20	256Wh	4.4 lbs 2 kg	20A	40A	181*77*170	7.1*3*6.7	≥1500@ 80%DOD	ABS
B-LFP12-50	12.8	50	640Wh	11.5 lbs 5.2 kg	50A	100A	198*165*175	7.8*6.5*6.9	≥3500@ 80%DOD	ABS
B-LFP12-100	12.8	100	1280Wh	23.1 lbs 10.5 kg	100A	200A	330*172*215	13.0*6.8*8.5	≥3500@ 80%DOD	ABS
B-LFP12-200	12.8	200	2560Wh	41.9 lbs 19 kg	200A	400A	483*170*240	19.0*6.7*9.4	≥3500@ 80%DOD	ABS
B-LFP12-300	12.8	300	3840Wh	55.1 lbs 25 kg	300A	600A	532*207*215	20.9*8.2*8.5	≥3500@ 80%DOD	ABS
B-LFP24-50	25.6	50	1280Wh	20.9 lbs 9.5 kg	50A	100A	260*168*209	10.2*6.6*8.2	≥3500@ 80%DOD	ABS
B-LFP24-100	25.6	100	2560Wh	41.9 lbs 19kg	100A	200A	483*170*240	19.0*6.7*9.4	≥3500@ 80%DOD	ABS
B-LFP24-150	25.6	150	3840Wh	55 lbs 25kg	150A	300A	522*240*218	20.6*9.4*8.6	≥3500@ 80%DOD	ABS
B-LFP24-200	25.6	200	5120Wh	81.6 lbs 37 kg	200A	400A	520*269*220	20.5*10.6*8.7	≥3500@ 80%DOD	ABS
B-LFP36-67	38.4	67	2573Wh	39.2 lbs 17.8 kg	80A	150A	483*170*240	19.0*6.7*9.4	≥3500@ 80%DOD	ABS
B-LFP36-100	38.4	100	3840Wh	62.8 lbs 28.5 kg	100A	200A	522*240*218	20.6*9.4*8.6	≥3500@ 80%DOD	ABS
B-LFP48-67	51.2	67	3430Wh	51.7 lbs 23.5 kg	80A	150A	522*240*218	20.6*9.4*8.6	≥3500@ 80%DOD	ABS

Working Temperature Range

Charge	Discharge	Protection level
32°F~131°F (0°C ~ 55°C)	-4°F~131°F (-20°C ~ 55°C)	Ip54
Storage (1 month)	Storage (1 year)	
-4°F~131°F (-20°C ~ 55°C)	32°F~95°F (0°C~35°C)	

1. All images are for reference only, and the data is based on BSLBATT standard test procedures and peer data.
2. Actual performance may vary due to local conditions. Only authorized personnel are allowed to operate or adjust the battery.

LiFePO4 Batteries

For boats



Safely reliable, durable batteries from the name you trust

Designed for Marine/Trolling Motor /UPS/Lawn Mover/Fish Finder/Access Control Power Energy Storage House Alarm

Model	Voltage	Capacity (Ah)	Nominal Energy (Wh)	Weight LBS (KG)	Working Current	PEAK Continuous Current (10s)	L W H Inches	L W H MM	Cycle life	Casing Material
B-LFP12-50	12.8	50	640Wh	11.5 lbs 5.2 kg	50A	100A	7.8*6.5*6.9	198*165*175	≥3500@ 80%DOD	ABS
B-LFP12-100	12.8	100	1280Wh	23.1 lbs 10.5 kg	100A	200A	13.0*6.8*8.5	330*172*215	≥3500@ 80%DOD	ABS
B-LFP12-200	12.8	200	2560Wh	41.9 lbs 19 kg	200A	400A	19.0*6.7*9.4	483*170*240	≥3500@ 80%DOD	ABS
B-LFP12-300	12.8	300	3840Wh	55.1 lbs 25 kg	300A	600A	20.9*8.2*8.5	532*207*215	≥3500@ 80%DOD	ABS
B-LFP24-50	25.6	50	1280Wh	20.9 lbs 9.5 kg	50A	100A	10.2*6.6*8.2	260*168*209	≥3500@ 80%DOD	ABS
B-LFP24-100	25.6	100	2560Wh	41.9 lbs 19kg	100A	200A	19.0*6.7*9.4	483*170*240	≥3500@ 80%DOD	ABS
B-LFP24-200	25.6	200	5120Wh	81.6 lbs 37 kg	200A	400A	20.5*10.6*8.7	520*269*220	≥3500@ 80%DOD	ABS
B-LFP36-100	38.4	100	3840Wh	62.8 lbs 28.5 kg	100A	200A	20.6*9.4*8.6	522*240*218	≥3500@ 80%DOD	ABS

Working Temperature Range

Charge	Discharge	Protection level
32°F~131°F (0°C ~ 55°C)	-4°F~131°F (-20°C ~ 55°C)	Ip54
Storage (1 month)	Storage (1 year)	
-4°F~131°F (-20°C ~ 55°C)	32°F~95°F (0°C~35°C)	

Note:

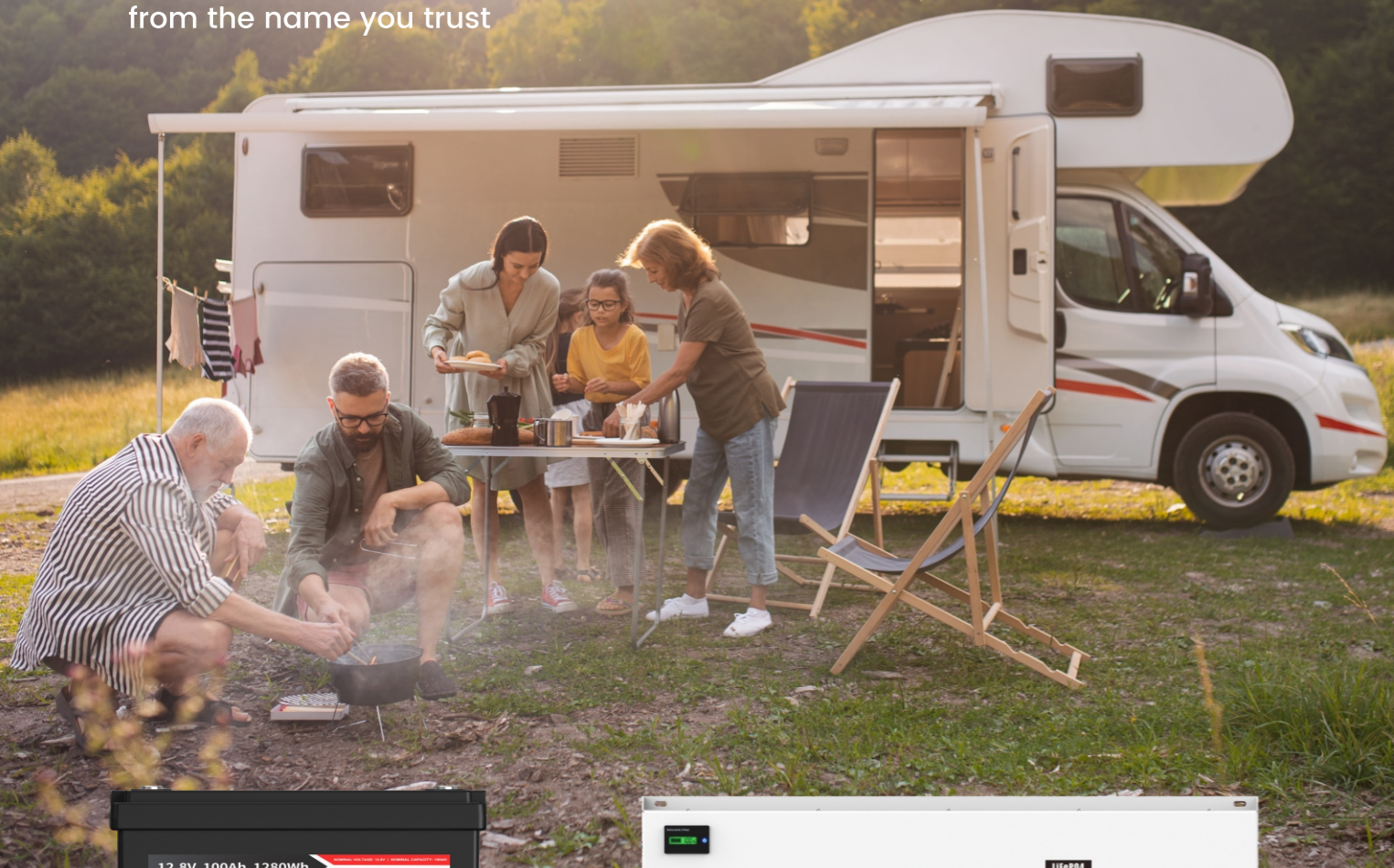
1. All images are for reference only, and the data is based on BSLBATT standard test procedures and peer data.
2. Actual performance may vary due to local conditions. Only authorized personnel are allowed to operate or adjust the battery.

LiFePO4 Batteries

For RV, Trailer & Camper



Safely reliable, durable batteries from the name you trust



Product list [Ultra-thin series]

Model	VOLTAGE	AH	MIN @25A	CONTINUOUS (A)	PEAK (A)	ENERGY (WH)	DIMENSIONS INCHES (MM)			WEIGHT LBS (KG)	TERMINAL TYPE	CASE MATERIAL
							LENGTH	WIDTH	HEIGHT			
B-LFP12-100S	12.8	100	240	200	300	1280	10.6 (270)	23.6 (600)	2.6 (65)	33.1 (15)	M8	Iron
B-LFP12-200S	12.8	200	480	200	300	2560	10.8 (275)	33.5 (850)	2.8 (70)	61.7 (28)	M8	Iron

Specification

	B-LFP12-100S	B-LFP12-200S
Model Number	B-LFP12-100S	B-LFP12-200S
Voltage Range(V)	9.2-14.6	9.2-14.6
Cell	3.2V100Ah	3.2V200Ah
Cell Series & Parallels	4S1P	4S1P
Rated Voltage (V)	12.8	12.8
Rated Capacity(Ah)	100	200
Rated Energy (Kwh)	1.28	2.56
Maximum Charge Current (A)	100	200
Maximum Discharge Current (A)	200	200
Pulse Current(A)(5s)	300	300
Recommended Discharge Voltage (V)	11.2	11.2
Life cycle (@25 0.5C/0.25C,80%DOD)	Approx. 4000	Approx. 4000
Short-circuit Current (< 10ms)	Approx. 1200A	Approx. 2500A
Dimension(W*D*H)	270*600*65 MM	275*850*70 MM
Total Weight (kg)	Approx. 15	Approx. 28
Internal Resistance Fully Charged @25C	10m Ohms	≤5m Ohms
Thermal Management	Nature Cooling	Nature Cooling
Operating Temperature Charge	50°C	0-50°C
Operating Temperature Discharge	-20-65°C	-20-65°C
Operating Humidity	60 ± 25% R.H.	60 ± 25% R.H.
Recommended Discharge Voltage (V)	13.6-13.8	13.6-13.8

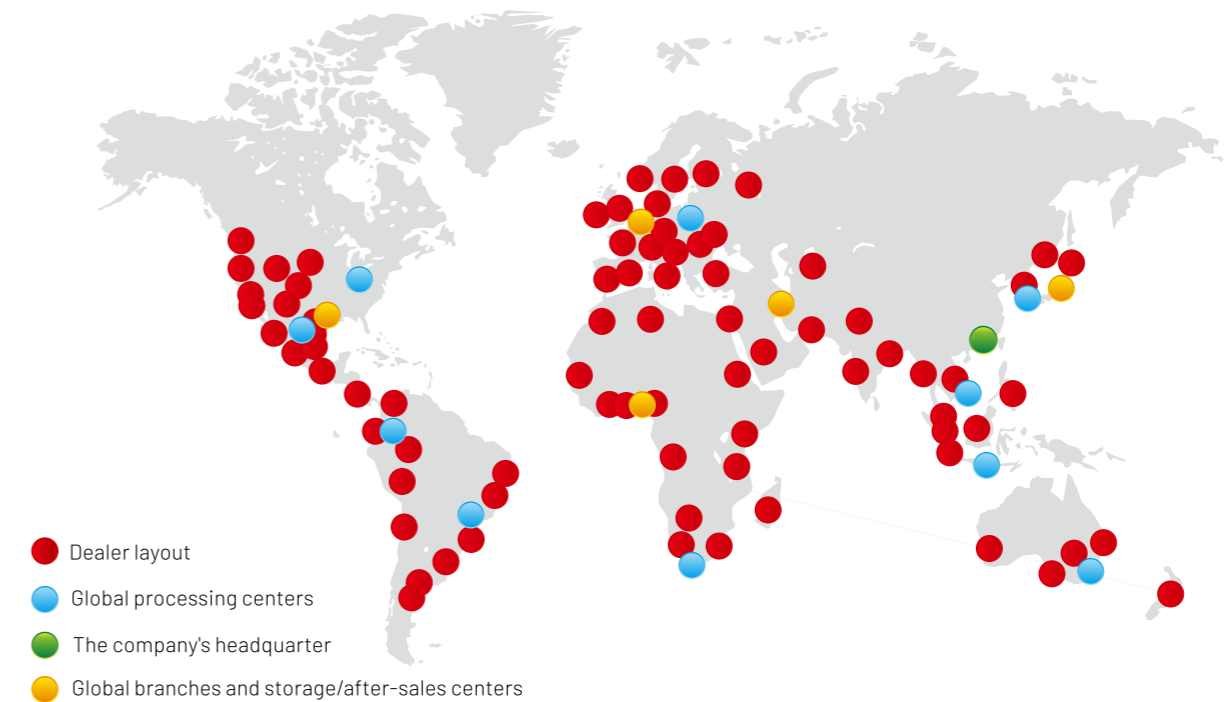
Factory advantage

- Organization And Environment
- Related Party Needs And Expectations
- Customer Requirements

Distribution cooperation

Brand center

- Build an international and reputable brand for lithium batteries.
- Bslbatt invites famous designers to invest heavily in brand building and promotion and design international brand image.



Dealer support

Authorized dealers of BSLBATT lithium battery in world

<p>Financial Support</p> <p>Return in the end of the year if acheive annual sales target. Co-organized exhibitions and exchanges by customers (the cost may be split 50/50)</p>	<p>Provide technical support</p> <p>Provide technical training / product training / After-sales the training to dealer team.</p>	<p>Sales Material Support</p> <p>Cataloges, Videos, Picture Material, Shirt with BSLBATT logo, Etc.</p>
<p>Potential Customers Sources</p> <p>Provide and transfer some inquiries or potential customer information to dealer directly.</p>	<p>Quick-wear Part Back up Support</p> <p>Provide some quick-wear part for back up to meet some emergency after sales.</p>	<p>Agency Mode (service and support for agents)</p> <p>We offer price protection to regional dealers</p>

3-4 Weeks times

The average build time for customized Lithium batteries and battery Management
Software ranges from 4 - 6 weeks
Depending on the vehicle quantity
And customization.

Confirm order	2 DAYS	✓
R&d drawing	5 DAYS	✓
Customer confirmation	3 DAYS	✓
Supplier production	5 DAYS	✓
Factory production	10 DAYS	✓