

UN38.3
transportation safety
certification

IEC

CE

UL

MH66184

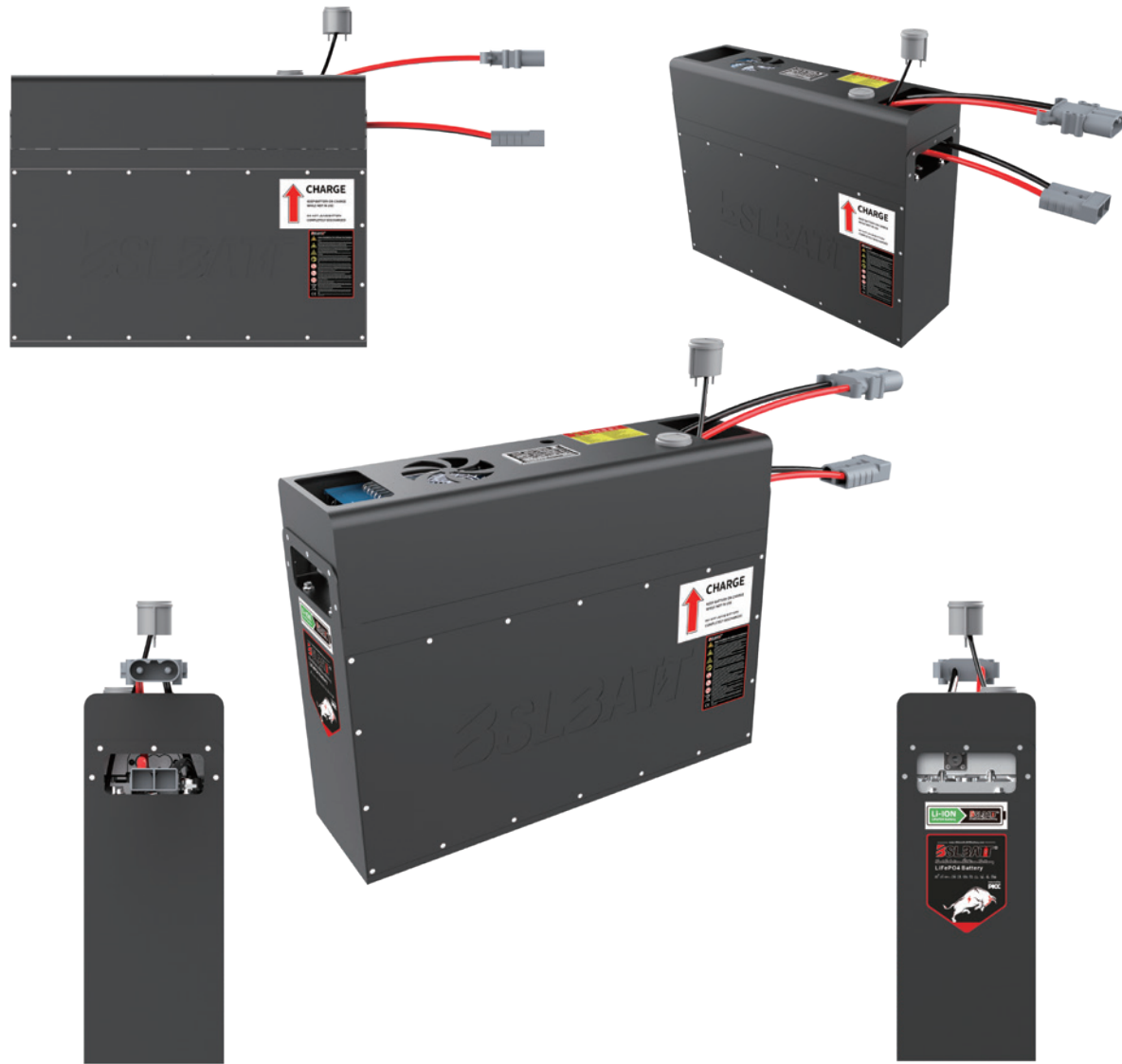
2024

BSLBATT Forklift Lithium Battery Standard

BSLBATT[®]
Best Solution Lithium Battery



Input Voltage	Capacity (Ah)	Finished Product No.	Cell	Charge	Combination Method	L(Mm)	W(Mm)	H(Mm)	Cell Weight (Kg)	Counter Weight (Kg)	Box Weight (Kg)	Total Weight (Kg)
25.6V	173	G1901-0001		Single Shot	1P8S	620	208	550				70
	205	G1901-0002			1P8S	620	208	550				72
	230	G1901-0003			1P8S	620	208	550				74
	280	G1901-0004			1P8S	720	208	550				98
	304	G1901-0005			1P8S	720	208	550				102
51.2V	346	G1903-0001	173	Double Shot	2P4S*2	815	540	400	122	138	57	327
	410	G1903-0002	205		2P4S*2	815	540	400	148	138	57	353
	460	G1903-0003	230		2P4S*2	815	540	400	154.4	138	57	360
	560-A	G1903-0004	280		2P4S*2	815	685	400	197.2	160	63	432
	608-A	G1903-0005	304		2P4S*2	815	685	400	215	160	63	450
	560-B	G1903-0006	280		2P4S*2	748	612	595	197.2	485	75	770
	608-B	G1903-0007	304		2P4S*2	748	612	595	215	485	75	787
	615	G1903-0008	205		3P4S*4	845	815	400	216.4	98	70	394
	690	G1903-0009	230		3P4S*4	845	815	400	226.4	98	70	404
80V	410	G1905-0001	205	Single Shot	2P5S*5	1030	660	400	226.2	220	68	524
	460	G1905-0002	230		2P5S*5	1030	660	400	253.8	220	68	551
	560	G1905-0003	280	Double Shot	2P5S*5	1040	830	400	305	266	90	675
	608	G1905-0004	304		2P5S*5	1040	830	400	336	266	90	705
83.2V	615	G1906-0001			3P4S*6+	900	750	615	353	237	88	688
	690	G1906-0002			3P2S	900	750	615	369.2	237	88	704



New Standard Package (NSP)

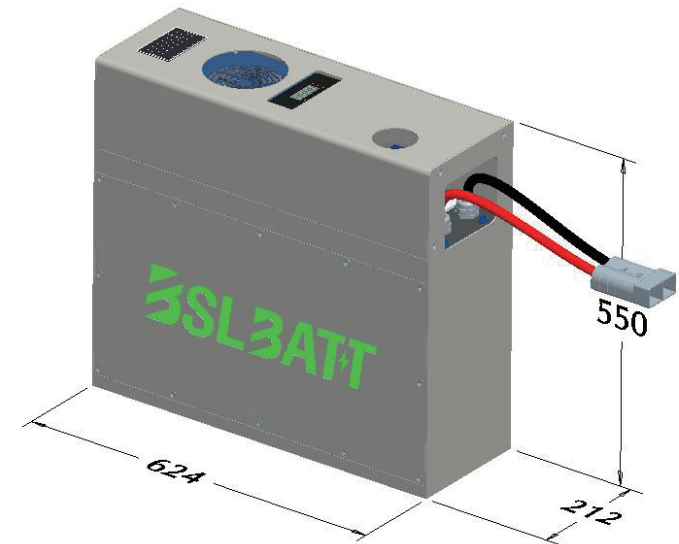
25.6V 173/205/230Ah

Nominal voltage: 25.6V

Nominal Capacity: 173Ah, 205Ah or 230Ah

Total weight of battery: about 90, 98 or 102KG

Charger: 110V input 50A, 220V input 100A





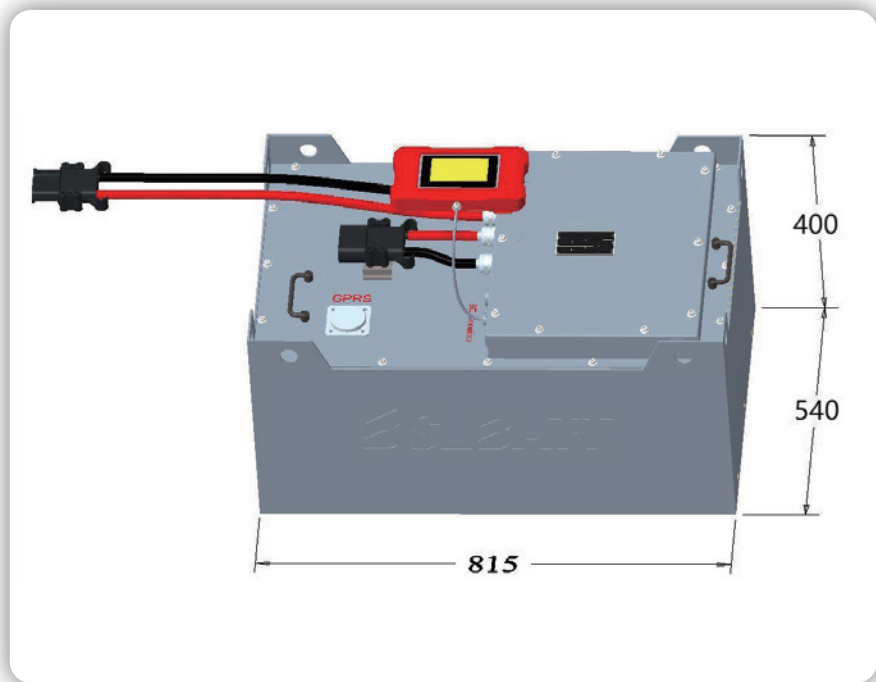
New Standard Package (NSP)

25.6V 346/410/460Ah

Nominal voltage:51.2V

Nominal Capacity:410Ah or 460Ah

Total weight of battery: about 365 or 385KG



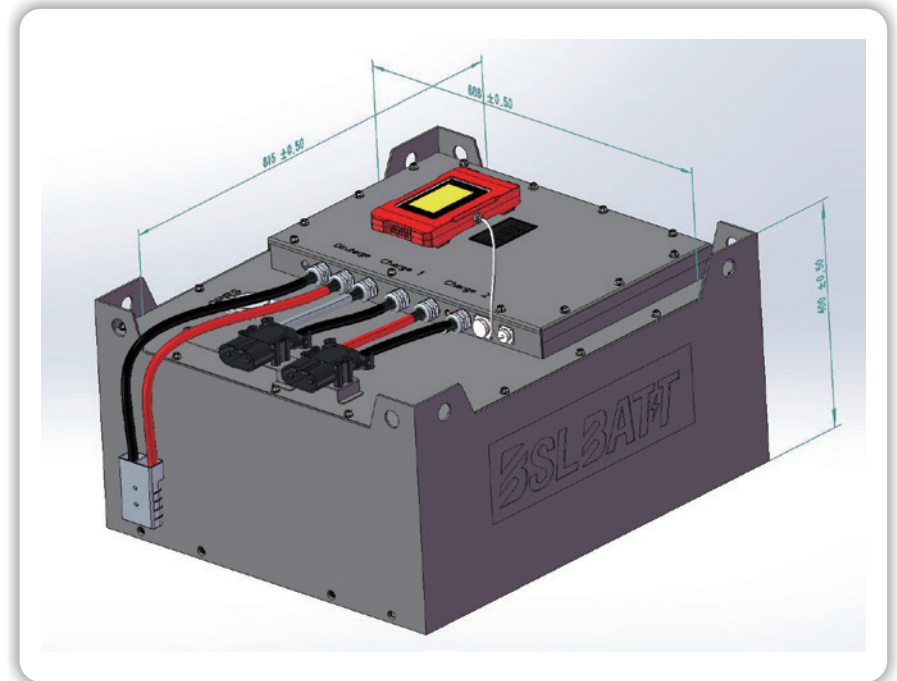
New Standard Package (NSP)

51.2V 560/608Ah-A

Nominal voltage:51.2V

Nominal Capacity:560Ah or 608Ah

Total weight of battery: about 365 or 385KG



815*685*400



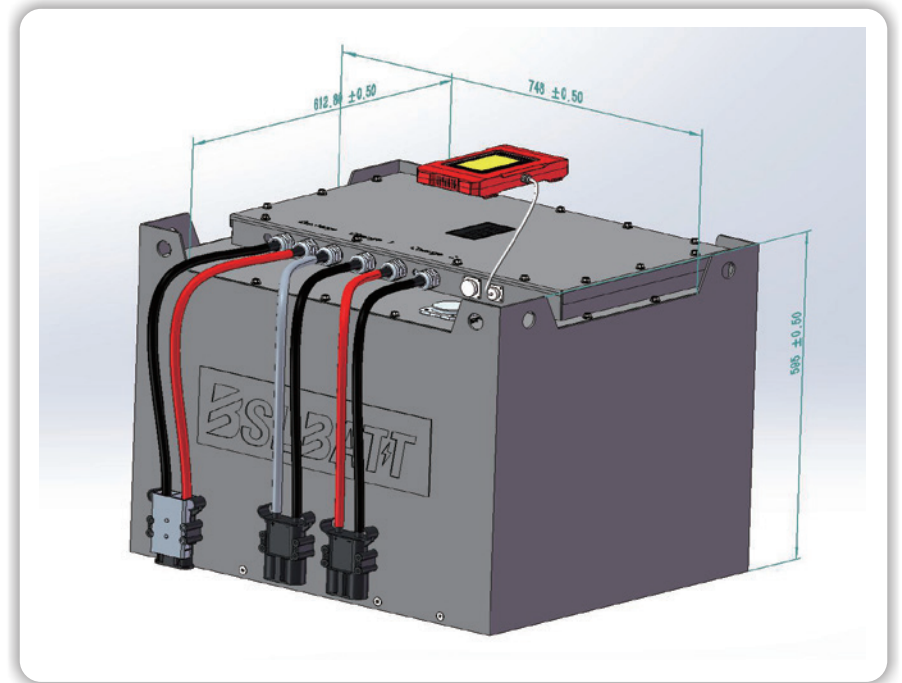
New Standard Package (NSP)

51.2V 560/608Ah-B

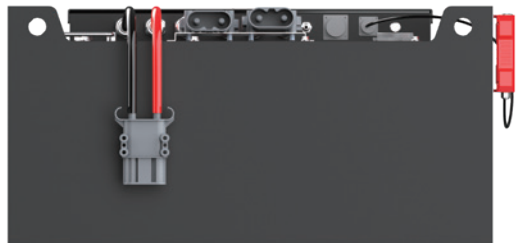
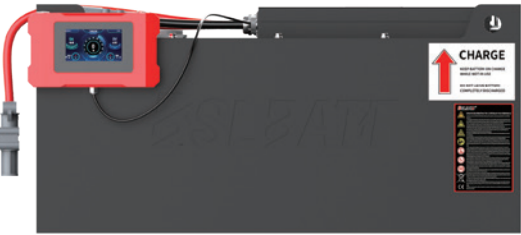
Nominal voltage:51.2V

Nominal Capacity:560Ah or 608Ah

Total weight of battery: about 365 or 385KG



612.8*748*595



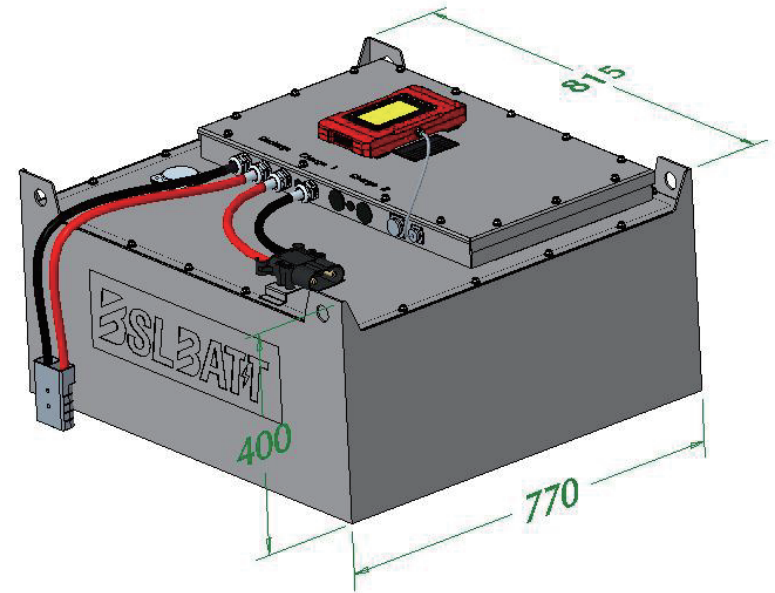
New Standard Package (NSP)

51.2V 615/690Ah

Nominal voltage:51.2V

Nominal Capacity:615Ah or 690Ah

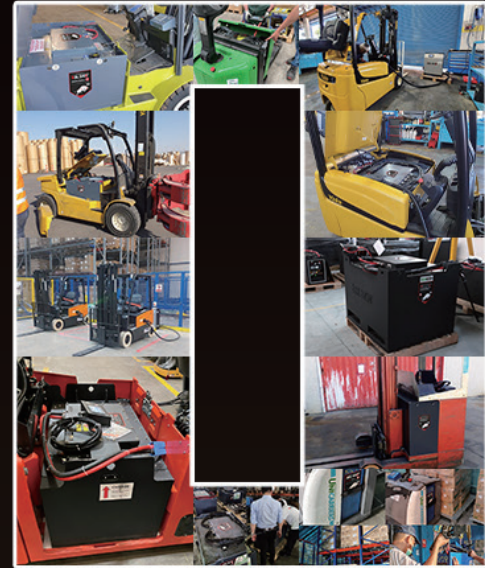
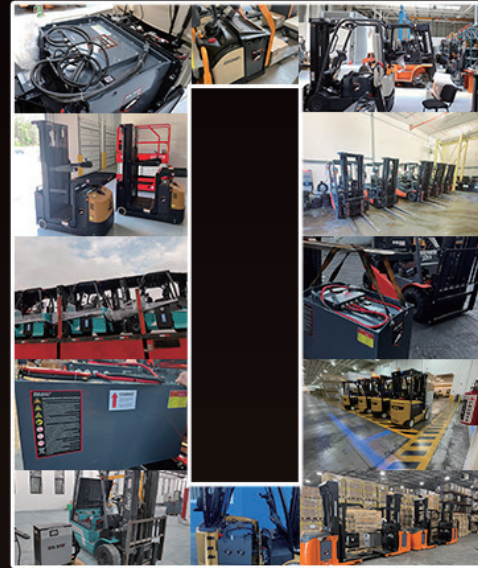
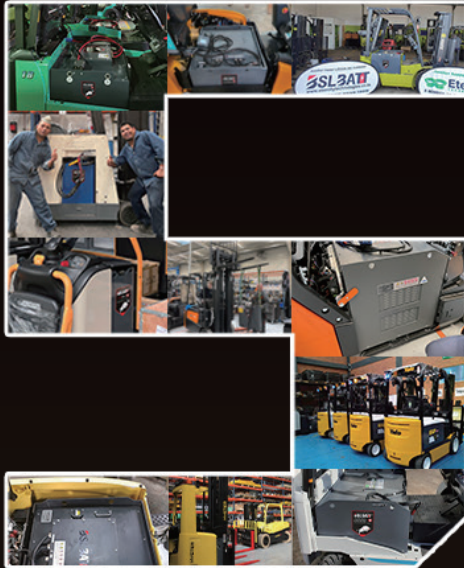
Total weight of battery: about 288 or 314KG



Global 54 Distributors, 4 Offices



📍 General Headquarters 📍 Offices 📍 Global Distributors



Projects! ⚡